



# Blue Wrap Bag Directions

Makes 2 Bags

## Supplies

1 44x44 Blue Wrap (straps)

1 44x44 or 36x36 Blue Wrap (Bag)

Sewing Machine

Demin or Heavy duty sewing machine needle

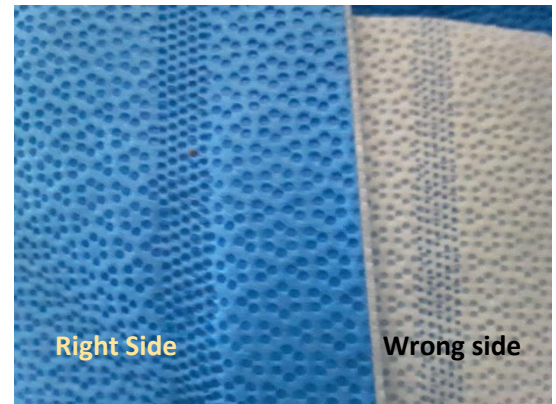
Thread

Rotary Cutter, ruler and mat

Paper Clips

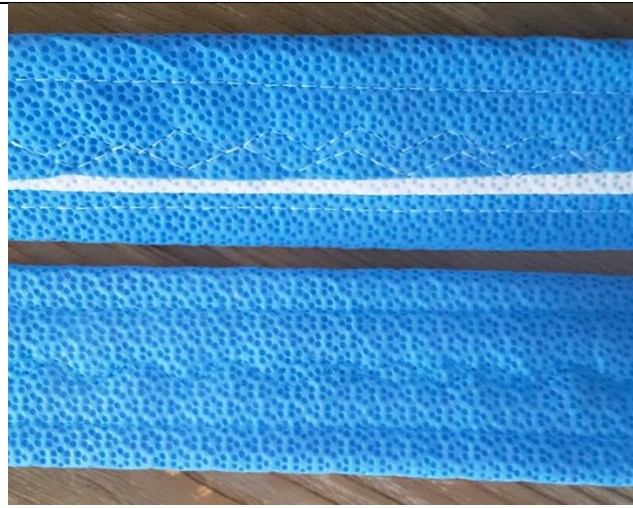
**RIGHT SIDE = Blue**

**WRONG SIDE = White**



<b><u>STRAPS</u></b>	
From 44x44 piece of blue wrap cut 2 pieces 4" by 44"	
Fold into thirds {white on the inside} and use paper clips to secure.	

Use wide Zig zag stitch and sew down the center of the strip, removing paper clips as you go. Add side stitching if you like



Cut finished straps in half, giving you 4- 22" straps.

### BAG

Blue wrap has an open side and a closed side (selvage).  
Cut either 36x36 or 44x44 blue wrap in half, so the selvage is on the short end.  
Create hem by folding over the short ends over twice towards the inside (white) of the bag, secure with paper clips.



Handle placement - On the white side of the bag by the hem mark for handle placement, For small bag mark at 4" from the edge, For large bag mark at 6" from the edge. Handles are placed on the inside of the marks as shown here.



### ASSEMBLY

Sew the hem of the bag (about 1/4" from edge) attach handles at 4" or 6", Back stitch to anchor handles. Repeat below first hem.



With right sides together (blue) sew down the sides.  
Trim threads and right side out bag.

Congrats!  
You made a Blue Wrap Bag!



Questions

<mailto:tamara.ochs@atlantichhealth.org>